

LPR GLOBAL

**Your Connection to Korean Manufacturing
and Industrial Products**



US Korea Hotlink



Contents



LPR Global At A Glance

- Overview
- Our History
- In the Spotlight
- Strengths and Achievements

LPR Global Values

- Our Expertise & Strengths
- Auditing and Sourcing Services
- Engineering Solutions
- Annual Partnership Event

LPR Global Market Solutions

- Custom Manufacturing
- Machinery
- MRO Products for Plants
- Automation Solutions
- Testing & Inspection





1

LPR Global At A Glance

LPR Global Overview



US Korea Hotlink

[US Korea Hotlink](#) by LPR Global is the largest consortium of Korean machinery and industrial part manufacturers.

The platform connects western companies that wish to develop global manufacturing and technical partnerships with Korean manufacturers in the following industries:



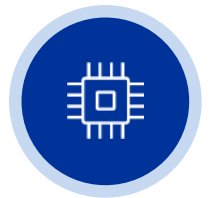
Industrial Machinery
& Tooling



Automation Products
& Solutions



Testing & Inspection
Systems



Plant Components
& Equipment

LPR Global is a trusted international consulting firm that specializes in global trade between the Western hemisphere and South Korea.

Our History



1:1 Matching

Extensive business networks and a strong understanding of business needs and cultures on both sides of the globe.

2001



USKoreaHotlink

The largest consortium of Korean machinery and industrial part manufacturers in North America.

2008



Engineering Solutions

LPR's engineering solutions for global companies range from local after-sales support and training to automation.

2012



On-Site Assessment

Audits of Korean suppliers' manufacturing process prior to the contractual phase.

2020

2006

**Certified Advisor
to the Korean
Federal
Government**

2011

**SMBA
Excellency
Award**

2011-
2016

**SMBA
Premium
Certification**

2017-
2020

**Awarded the best
consortium
practice in North
America**

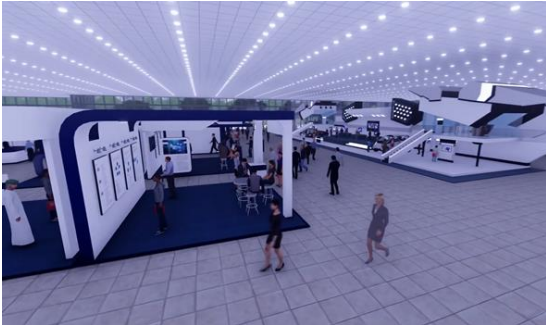
2020-
2021

**SMBA
Premium
Certification**



In the Spotlight

Publication and Media Coverage



CEO Mikah Lee invited as keynote speaker to the *Digital Twin Fair 2020*, the 1st Augmented Virtual Machinery Trade Show in South Korea



LPR Global's CEO and best-selling author, Mikah Lee, participated in the first Canadian Women Entrepreneur Delegation to South Korea in 2020



LPR Global Featured in *Manufacturing Magazine* in 2016



LPR Global's CEO, Mikah Lee, profiled on Toronto Star's Front-Page Business Section - the largest daily newspaper in Canada in 2011

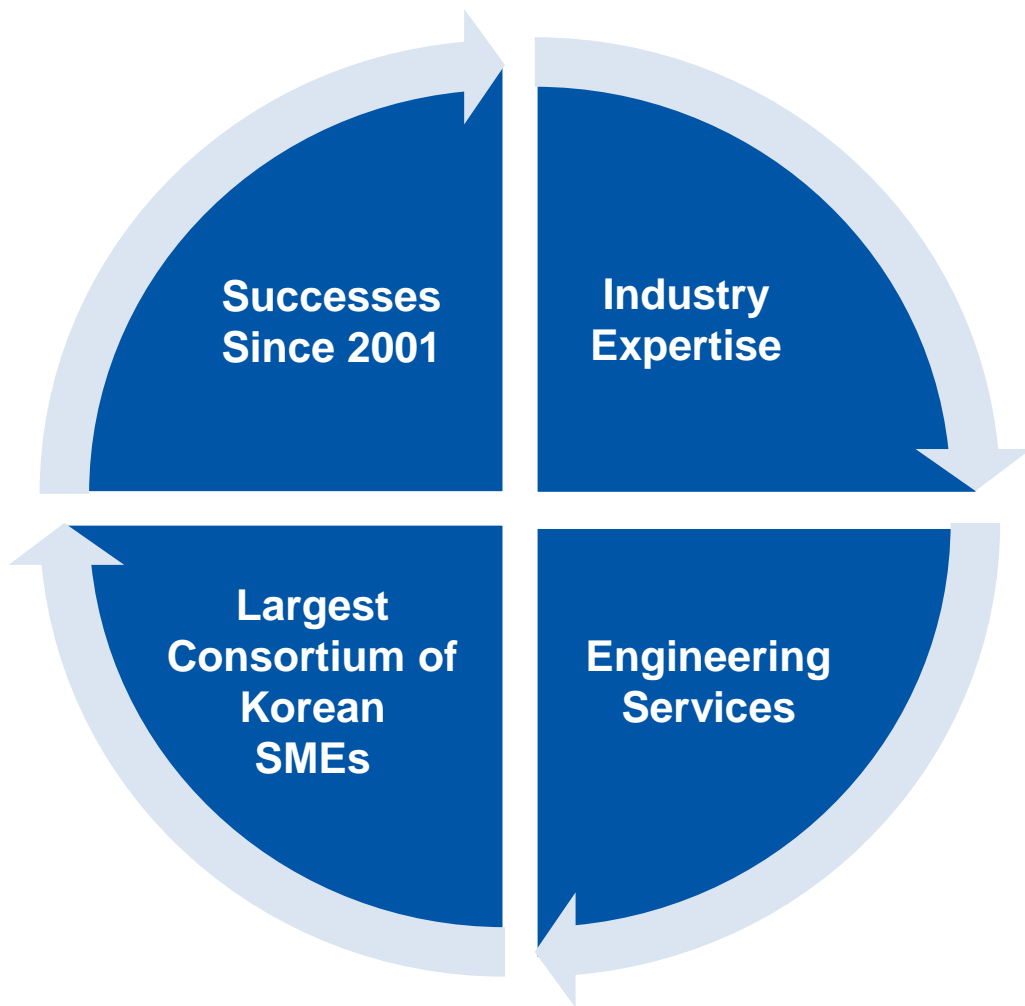


LPR Global featured on South Korea's National Television, YTN News in 2011

Strengths and Achievements



Our continuing success is based on 20+ years of experience in bringing the most reliable industrial solutions from South Korea to North America and the rest of the world.



The background of the slide features a collage of financial data visualizations. At the top, a bar chart shows values increasing from 1994 to 2003, with labels like 0.12, 0.21, 0.49, 0.74, 1.13, 1.45, and 1.35. Below this, a line graph shows fluctuations over time, with labels like 2000/1M, 2003/5M, and 2003/9M. In the bottom left, another bar chart is visible with a y-axis labeled 'Cy' and values 200 and 400. A silver pen with a gold tip is positioned in the lower right, pointing towards the charts.

2

LPR Global Values

Our Expertise & Strengths



LPR Global is dedicated to connecting reliable South Korean manufacturers of components, equipment, and solutions with Western companies.

Our Expertise

- Tailored solutions for product sourcing
- Market-specific technical partnerships
- OEM and private label solutions

Our Strengths

- 21+ year experience in machinery trade
- Exclusive access to government-vetted South Korean manufacturers
- Clear, effective, and real-time communication with Korean suppliers
- Global presence for aftersales support in 9 countries
- LPR engineering office in South Korea for quality control





Vendor On-Site Assessment Program

Launched in 2020 for Western companies who wish to audit prospective Korean suppliers **prior** to the contractual phase, or audit their existing Korean partners.

- 1) Vendor Site Survey
- 2) Quality and Progress Check on Production
- 3) Communication Management
- 4) Quality and Progress Check on Production

Sourcing Services

With 20+ years of experience in the Korean market, LPR provides global companies with both cultural and industrial expertise.

We are committed to minimizing your risks in doing business in automotive, steel mill, power plant, oil & gas or home appliance industries with Korea.



Local On-Site After-Sales Support for LPR Machinery

LPR provides local after-sales support for LPR machinery and assembly lines worldwide. We have engineering presence in Germany, Poland, Russia, Turkey, India, Brazil, Mexico, Canada, and the USA.

Commissioning and Project Management for Installations

- 1) Automated Assembly Line Implementation
- 2) Cell Automation
- 3) Robotic Automated Machines for Mass Production

Custom Manufacturing Services

- 1) Tooling and Molds
- 2) High Precision Machining and Fabrication
- 3) OEM Manufacturing
- 4) Reverse Engineering

Annual Partnership Event



LPR Global 1:1 Matching Conference Since 2012

The annual matching conference is the only event that is officially promoted and sponsored by the Korean federal government and the *Korea Association of Machinery and Industry*.

Each year it brings successful matchings between global companies & Korean industrial parts and machinery manufacturers.

LPR Global Technology Forum
October 23, 2019
Kintex Expo Center, Ilsan, South Korea

LPR Global provides global industry professionals with the opportunity to explore advanced South Korean manufacturing technologies and build long-term business partnerships with leading Korean suppliers.

Program

- One-on-one meetings with pre-selected suppliers
- Factory visit arrangements
- Invitation to KOMAF 2019, Korea's largest machinery show
- Networking luncheon with industry leaders

Organizer

LPR GLOBAL

Sponsored By: 

www.lprglobal.com | www.uskoreahotlink.com | info@lprglobal.com



The background of the slide features a collage of financial data visualizations. At the top, a bar chart shows a series of brown bars representing data from 1997 to 2003, with values ranging from 0.12 to 1.35. Below this, a line graph with blue markers shows an upward trend. In the bottom right, a silver pen with a gold tip is positioned over another line graph. The overall color scheme is light blue and white, with a dark blue border around the entire slide.

3

LPR Global Market Solutions

Custom Manufacturing



Machining Services, Custom Manufacturing for Steel Mills, Industrial Machine Builders, Automated Line Integrators, Die Manufacturers, and Turbine Repair Companies



Mold & Progressive Dies



Precision CNC Machined Parts



Forging, Castings, Machining



High Speed Spindles



Forged & Cast Steel Rolls for Mills



Taylor Vortex Reactor



3D Manufacturing



Steel Castings



CNC Machined Parts

www.uskoreahotlink.com/products/manufacturing

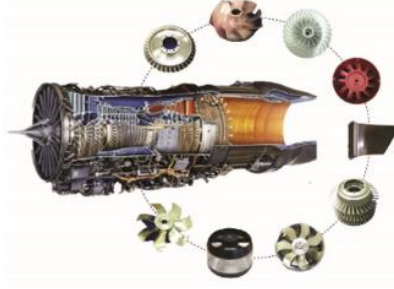
Products for Power Plants



Power Plant & Shipbuilding Components, Flow Control Joints, Custom Manufacturing, Turbine Bearings & Blades, Casting, Turbo Blowers



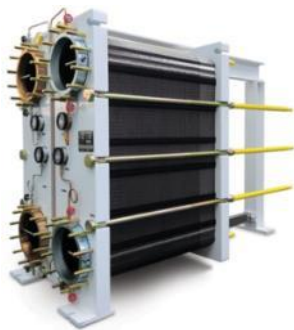
Hydrodynamic Bearings



Turbine Compressor & Pump Components



Rotary Unions & Swivel Joints



Tubes for Heat Exchangers



HRSG Stream Drums



Turbo Blowers



Industrial Fasteners, Bolts & Nuts



Pump Casting & Impeller Steel Casting



Pressure Vessel Hemi-Heads

www.uskoreahotlink.com/products/epc

Machinery



Custom Machines for Forming, Welding, Pressing and Surface Treatment in Automotive Part Manufacturing Lines & Home Appliance

Metal Forming & Fabrication



Tube Forming & Cutting Machines



Gun Drilling Machines



Rotary Friction Welding Machines



Roll Forming Machines



Stretch Bending Machines



Hemming Machines



Exhaust System Making Machines



Powder Compacting Presses



Steel Mill Equipment

www.uskoreahotlink.com/products/machinery

Machinery



Custom Machines for Forming, Welding, Pressing and Surface Treatment in Automotive Part Manufacturing Lines & Home Appliance

Surface Finishing & Treatment



Superfinishing Machines



Centerless Grinding Machines



Electroless Plating Line



Rotary Table Surface Grinder

www.uskoreahotlink.com/products/machinery

Machinery



Custom Machines and Tooling for Forming, Welding, Pressing and Surface Treatment in Automotive Part Manufacturing Lines & Home Appliance

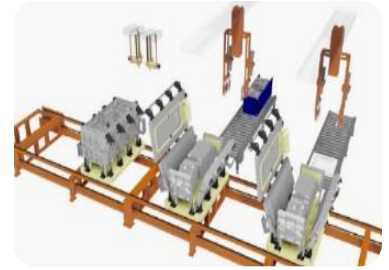
Plastic Forming Equipment



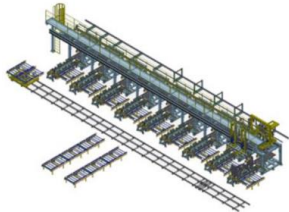
High Pressure Polyurethane Equipment



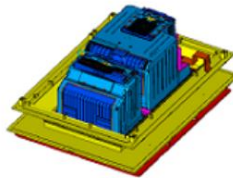
Thermoforming Vacuum Forming Machines



Refrigerator Foaming Equipment



Appliance Assembly Equipment



PU Vacuum Forming Molds



Interior Trim Molds & Checking Fixtures

www.uskoreahotlink.com/products/machinery/

www.uskoreahotlink.com/products/manufacturing/

Automation Solutions

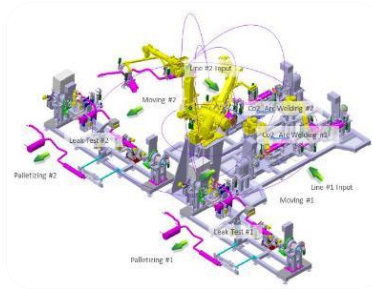


Robotic Automated Welding, Gantry Robot and Motion Tracking System, Rack & Pinions, Automated Car Seat Assembly Line

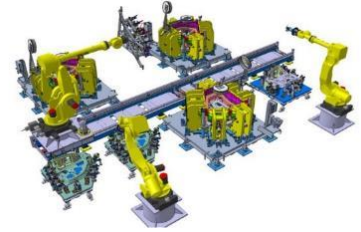
Automation Assembly Lines



Automated Seat Assembly Lines



Automated Welding Assembly Lines



Body-In-White & Chassis Welding & Hemming System

Automation and Motion Control Components



Gantry Robots



High Precision Gearboxes



Roller Cam Gear Reducer



Hybrid Stepper Motors

www.uskoreahotlink.com/products/factory-automation

Testing & Inspection



Material Verification NDT for Pipes & Plants;
Friction & Wear; Performance, Durability and
Reliability for Auto Parts, SAM

Material Properties and Process Inspection



**Tribometers Friction & Wear
Testing Equipment**



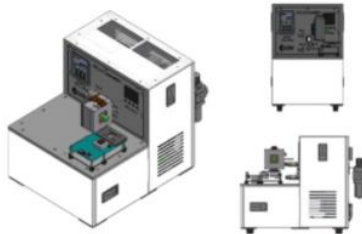
**Fatigue & Durability
Testing Equipment**



**Non-Destructive
Testing Machines**



Cable Fault Locators TDR



**Environmental Temperature
Chambers**



**Scanning Acoustic
Microscopy**

www.uskoreahotlink.com/products/testing-inspection

Steel Mill Equipment



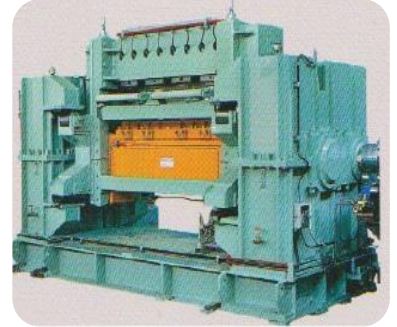
Complete and custom steel forming lines, furnaces, machinery, rolls, and cylinders.



Steel Mill Equipment



Forged & Cast Steel Rolls for Mills



Cut-to-Length Slitting Lines



Custom Mill-Duty Cylinders

www.uskoreahotlink.com/products/machinery/

www.uskoreahotlink.com/products/manufacturing/

LPR GLOBAL

**Your Connection to Korean Manufacturing
and Industrial Equipment**

Headquarters

607-344 Bloor St W.
Toronto, ON M5S 3A7
Canada

Engineering Office

An der Moosach 7
85376 Neufahrn bei Freising
Germany

Contact

+1 416-423-5590
info@lprglobal.com

URL

www.lprglobal.com | www.uskoreahotlink.com



US Korea Hotlink

